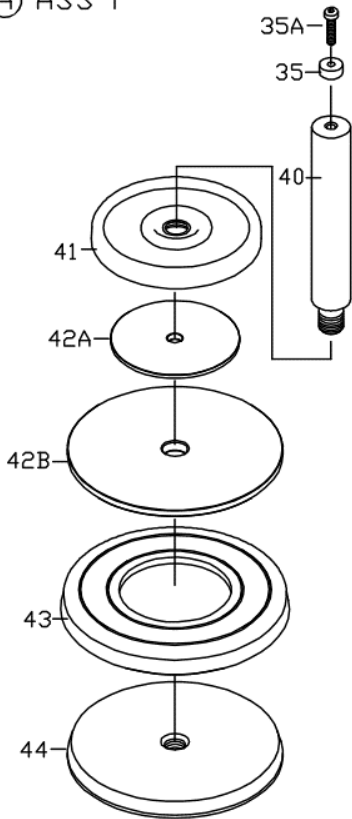
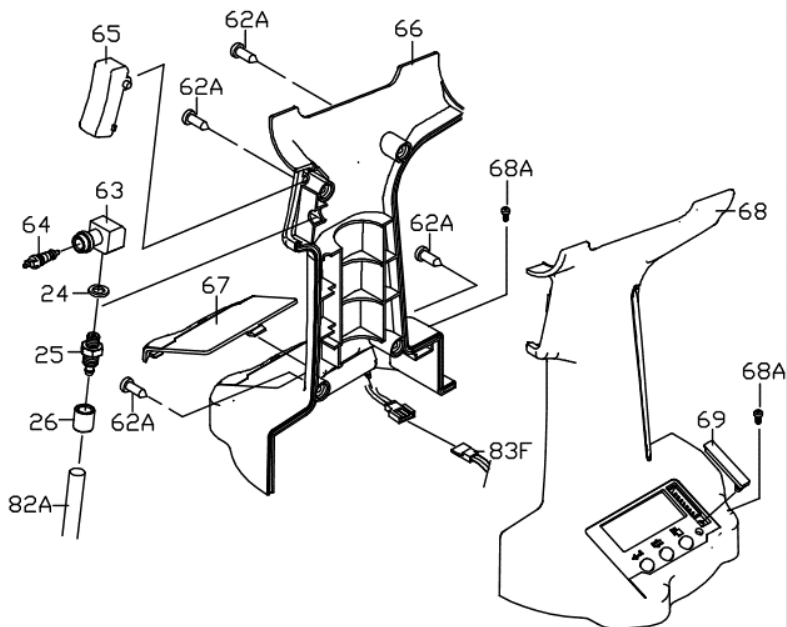
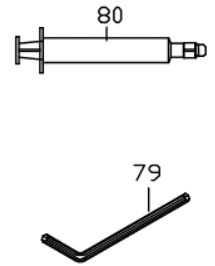
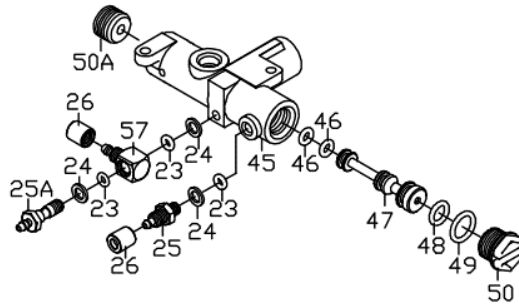


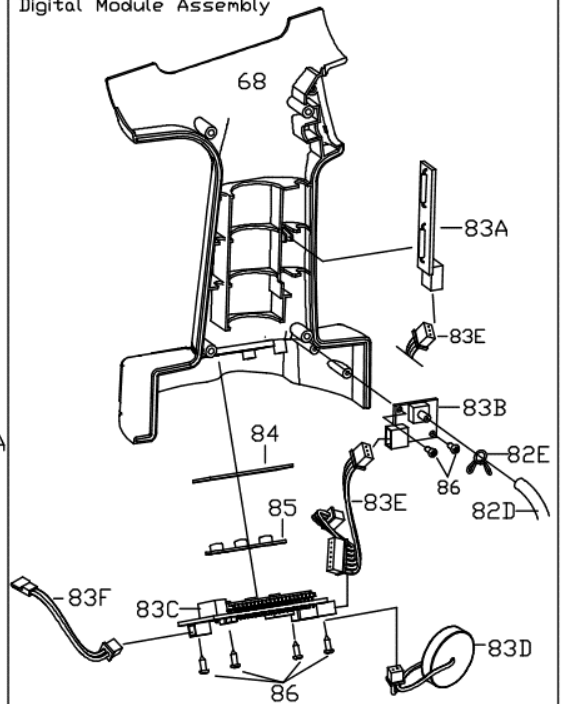
Ⓐ ASS'Y



Ⓒ ASS'Y



Digital Module Assembly



ZT3213D 3/8" Air Hydraulic Installation Tool

TECHNICAL DATA	Traction Power	lbf(kgf)	:	(3200)
	Stroke Length	mm	:	13
	Net Weight	lbs(kgs)	:	5.6(2.5)
	Nosepieces Equipped	inch(mm)	:	Need to purchase separately.
	Max. Capacity		:	3/8" (10mm) steel monobolt / C6L lock bolts

P A R T S L I S T

Index	Part #	Description	Index	Part #	Description
1.	321101	Hydraulic Section	*48.	OR0711	O-RING
2.	318203	Rubber Washer	48A.	OR0711A	O-RING
*3.	BR2025	Back-Up Ring (2)	*49.	OR1014	O-RING
11.	321105	Head	50.	107409	Inlet Plug
12.	321103	Front Cap	50A	922409	Plug
13.	321301	Hydraulic Plunger	51.	HC00407010	Set Screw (3)
*14.	OR3946	O-RING (2)	52.	202402	Base
*15.	BR3946	Back-Up Ring (2)	52A.	202404	Rubber Boot
16.	321319	Return Spring	61.	PW0306	Washer
17.	OR0812	O-RING	62.	ST0310	Screw
18.	OR3034	O-RING (3)	62A.	HC00305006	Set Screw (4)
19.	321102	Rear Gland	63.	107602	Valve Body
20.	OR3542	O-RING	64.	107601	Bleeding Valve
21.	HR00812508	Set Screw	65.	107201R	Trigger
22.	258801	Hanger	66.	202107RE	Plastic Grip-Right
23.	OR0306	O-RING (6)	67.	202107C	Battery Cap
24.	612714	Washer (5)	68.	202107LE	Plastic Grip-Left
25.	612717	Socket (3)	68A.	HR002504506	Set Screw (2)
25A.	612713A	Socket	69.	202E09	Dust Cover
26.	612711	Cap (4)	70.	919904	Silencer
27.	520106	Nut	71.	919903	Muffler Seat
28A.	3211082	Hydraulic Tube Connector-B	72.	919905	Silencer
28B	OR1417	O-RING	73.	919901	Mandrel Collector
28C	8211012	Hydraulic Tube Washer	74.	919906	Muffler Cap
28D	2021081	Hydraulic Tube Connector-A	79.	314755	5mm Hex. Wrench
28E	5201083	Washer	80.	922901	Oiler
*29.	OR2025	O-RING (3)	82A	202704A	2.5x4 PU Hose(Black)
30.	202401R	Upper Cover	82B	321704B	2.5x4 PU Hose(Orange)
31.	NN005080	Nut (4)	82D	202704D	2.5x4 PU Hose(Black)
32.	202403RZ	Air Cylinder Body	82E	258804	4mm Hose Loop (2)
33.	HC00508020	Set Screw (4)	83A	202E01	Counter Sensor
34.	OR1419	O-RING	83B	202E02	Pressure Sensor
35.	258504	Magnet	83C	202E03	Digital Display
35A.	TC00508010S	Set Screw	83D	202E04	Lithium Battery
*36.	OR1621	O-RING (2)	83E	202E05	Signal Terminal
*37.	BR1621	Back-Up Ring (2)	83F	202E06B	Power Cable - Display Terminal
40.	202501	Plunger Rod	84	202E07	Display
41.	202505	Bumper Ring	85	202E08	Button
42A.	202504	Front Head Disc A	86.	ST0206	Screw (6)
42B	202503	Front Head Disc B	89.	92L2	Air Inlet Assembly
43.	920505	Packing Ring	90	3213SK	Service Kit (opt.)
44.	202502	Lower Plate			(No.03.14.15.29.36.37.46.48.48A.49)
45.	919211	Valve Case			
*46.	OR0408AS	O-RING (2)			
47.	919202A	Valve Stem			

Maintenance Schedule

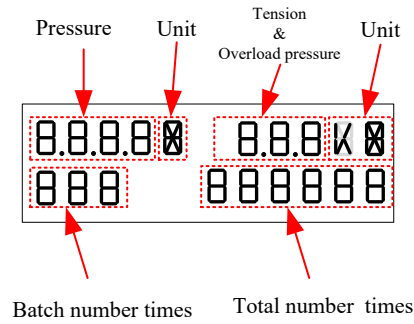
Frequency	Action
Daily after work or every 5,000 cycles	Lubricate tool through air inlet . Clean inside of Head
Jaws will not grip rivet stem or Every 20,000 cycles	Replace new Jaws
When oil leakage occurs or every 50,000 cycles	Replace O-Rings and Back-Up-Rings in Hydraulic Section and Hydraulic Tube .
every 100,000 cycles	Replace Packing Ring in Air Cylinder

Troubleshooting

Symptom	Diagnosis	Remedy
Rivet cannot be set by a single pull	<ol style="list-style-type: none"> 1. Low working air pressure 2. Tool requires re-priming 3. Worn Jaws or dirt in Jaws 4. Broken Jaws 	<ol style="list-style-type: none"> 1. Check air pressure at the tool. 2. Priming the tool correctly according to the instruction 3. Replace the Jaws
The tool can't do suction	The Suction Switch didn't open	Turn on the Suction Switch .
Jaws will not grip rivet mandrel	<ol style="list-style-type: none"> 1. Worn Jaws or build up of dirt on Jaws 2. Jaw Housing loose 3. Weakened Jaw Pusher Spring 	<ol style="list-style-type: none"> 1. Clean before replace new Jaws 2. Tighten Jaw Housing, Jaw Housing Coupler and Nut 3. Replace new Jaw Pusher Spring
Broken rivet mandrel can't be released by Jaws	<ol style="list-style-type: none"> 1. Dirty Jaws and Jaw Housing 2. Weakened Jaw Pusher Spring 3. Hydraulic oil over primed. 	<ol style="list-style-type: none"> 1. Clean and re-lubricate 2. Replace Jaw Pusher Spring 3. Remove Plug Screw and O-Ring, let it spill till stop by itself
Broken rivet mandrel jammed inside the Head	<ol style="list-style-type: none"> 1. Damaged Jaws 2. Damaged or dirty Jaw Pusher 	<ol style="list-style-type: none"> 1. Replace Jaws 2. Replace or clean Jaw Pusher
The suction force is not strong enough to suck broken mandrel	<ol style="list-style-type: none"> 1. Low air pressure 2. Air leakage inside Suction Switch 	<ol style="list-style-type: none"> 1. Check and regulate proper air pressure 2. Check if exhaust air is stuck at rear end of Collector 3. Check and replace O-Rings
Digital monitor no display or show "Low"	Low battery power.	Replace new battery
Digital monitor show "Er1".	Inlet pressure is higher than 7.5kg/cm² .	Adjust the inlet pressure to the pressure below 7.5kg/cm² .
Digital monitor show "Er2".	<ol style="list-style-type: none"> 1. Oil leaking causes insufficient hydraulic oil 2. Improper assembly of the tool 	<ol style="list-style-type: none"> 1. Check the cause of leakage and replace seals if necessary 2. Re-prime hydraulic oil.

Digital Module Operation

1. Digital monitor



2. Button explanation

There are three button on the plastic grip-left.

: **Module button**. The button is used to choose unit or 0~9 number.

: **Shift button**. The button is used to select the mode.

: **Enter button**. The button is used to confirm setting.

3. Turn on & turn off the monitor

Turn on : Push button or the tool is working.

Turn off : No actuating the tool within 30 seconds, the monitor will be shut down automatically

4. Unit Selection

a. Push button 3 seconds. Enter mould function, the monitor begins to flash.



b. Push button. Pressure and **pulling force** display begins to flash.

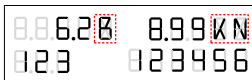
c. Push button. Enter **Unit** choose mode, Air Pressure and **pulling force** unit display begins to flash.



d. Push button. Change unit.



Push button again. Change unit.



Push button again. Change unit.



e. Push button. Finish **Unit** setting. The monitor stop flashing.

Table 1 below is **Unit** selection of **Air Pressure** and **Pulling Force**.

Table 1. Unit displays

	Air Pressure unit	display	Pulling Force unit	display
ISO	Kg/Cm ²	K	KgF	K
ISO	MPa	M	NF	N
Newton	Bar	B	NF	N
ISS	Psi	P	LbF	B

5. Setting batch number

a. Push **←** button 3 seconds. Enter module function, the monitor begins to flash.



b. Push **↔** button. The batch number display begins to flash.



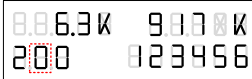
c. Push **←** button. Enter batch number times function. The first number display begins to flash.



d. Push **□** button. Change number 0~9.



e. Push **↔** button. Change numbers'.



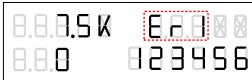
f. Push **←** button. Finish batch number setting. The monitor is stop flashing. Batch number display will show "0".



g. Push **←** button twice, the batch number display will show "0"

6. Error message :

a. If working air pressure is over 7.5 kg/ cm²(107psi), the monitor will display "Er1".



b. Insufficient hydraulic oil inside Hydraulic Section, the monitor will display "Er2".



c. If battery is low power, the monitor will display "Low".

